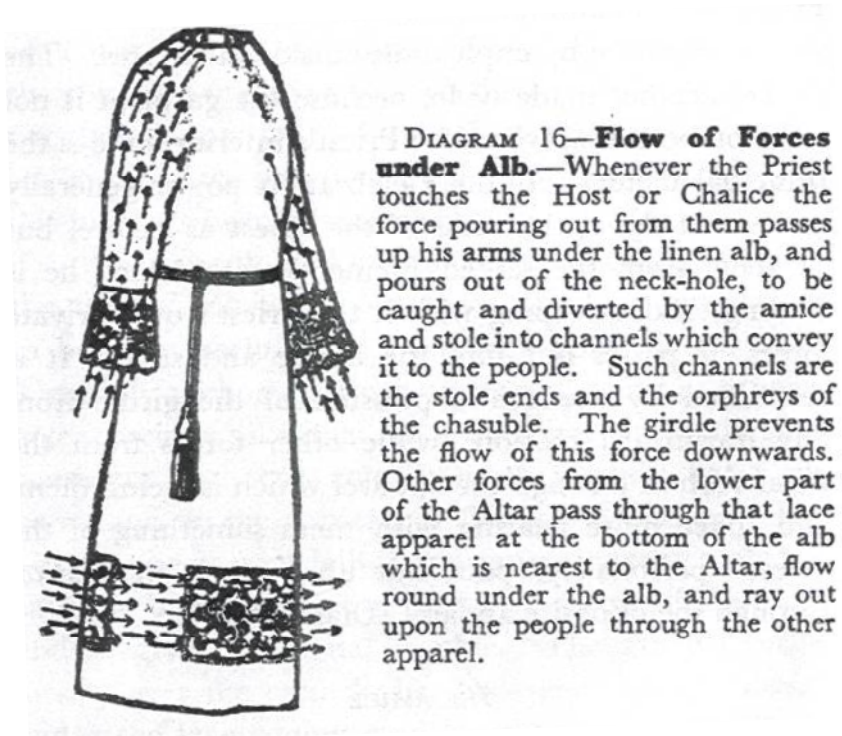
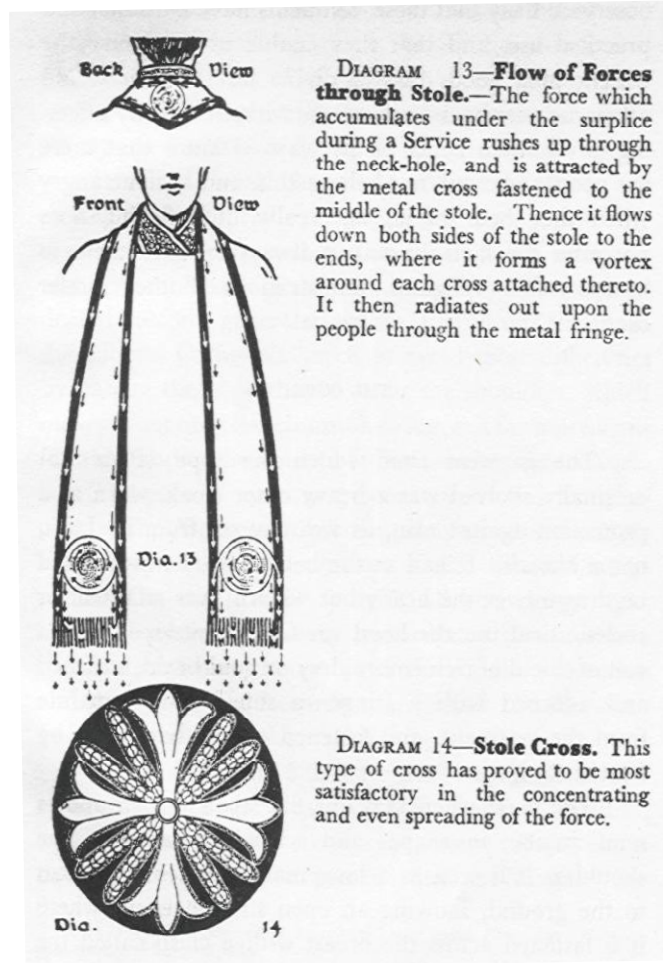


Energy flow through robes worn by clergy



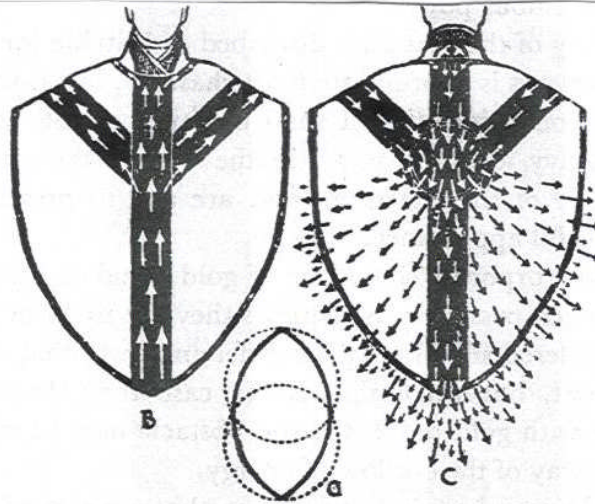


DIAGRAM 17—Flow of Forces in the Chasuble. The forces radiating from the Host and Chalice are caught up by the central orphrey or pillar of the chasuble. They then flow upwards, passing along the humeral orphreys and round the neck-band to the opposite pillar. Thus when the Priest is facing the Altar a torrent of force pours out from the central radiating disc on the back, and also from the lower point of the chasuble, and when he faces the people this disc and the pillar beneath it gather up the force and send it streaming over the shoulders to the front pillar, thence to radiate out upon the people. The forces boiling up inside the chasuble are caught by the metal apparel of the amice and swept into the general circulation, although a certain amount may overflow from under the edges of the vestment. Fig. A represents the general shape of the chasuble when laid open upon the ground—that of a Vesica Piscis; Fig. B the front and Fig. C the back of a chasuble.

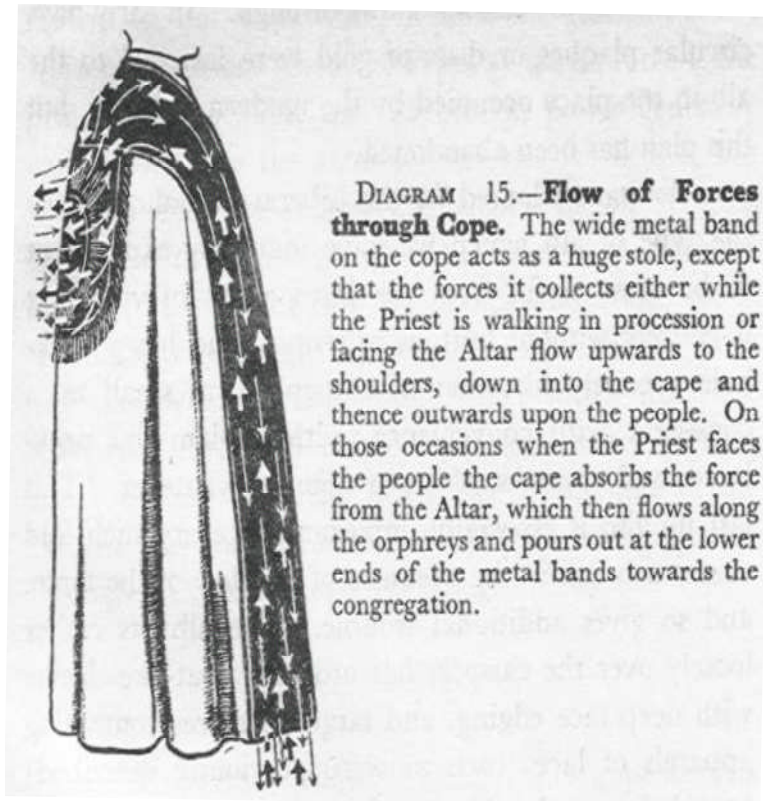


DIAGRAM 15.—Flow of Forces through Cope. The wide metal band on the cope acts as a huge stole, except that the forces it collects either while the Priest is walking in procession or facing the Altar flow upwards to the shoulders, down into the cape and thence outwards upon the people. On those occasions when the Priest faces the people the cape absorbs the force from the Altar, which then flows along the orphreys and pours out at the lower ends of the metal bands towards the congregation.